

Araucaria

Name

Name : Araucaria

Latin name : Araucaria

French name : Pinhão

Source

Organe : seed

Sample Origin : Brazil

Morphology

Size 10-50 μm

Shape : spherical & hemispherical

Structure

Allomorph : C

Fraction of allomorph A : 39%

Fraction of allomorph B : 61%

Crystallinity index : 45%

Thermal properties

Melting temperature : 60.1 $^{\circ}\text{C}$

Melting interval : 29.9 $^{\circ}\text{C}$

Melting enthalpy : -14.5J/g

References

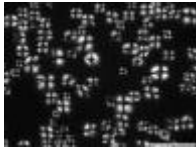
Bibliography : Starch characterisation of Araucaria angustifolia and Araucaria araucana seeds

Starch presentation

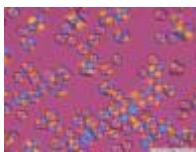
Conforti P.A., Lupano C.E.

Starch/Starke 59 (2007) 284-289

Image(s)



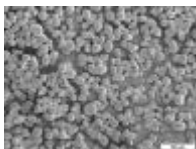
Optical micrograph (OM)



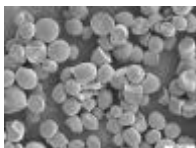
Optical micrograph (OM)



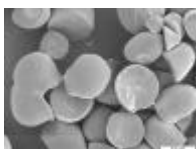
Sample Source



Scanning electron microscopy (SEM) image

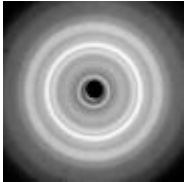


Scanning electron microscopy (SEM) image

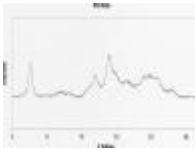


Starch presentation

Scanning electron microscopy (SEM) image



X-ray diffraction (XRD) pattern



X-ray diffraction (XRD) profile