

## Canna indica

### Name

Name : Canna indica

Latin name : Canna indica

French name : Conflore

### Source

Organe : tuber

### Morphology

Size 50-100  $\mu\text{m}$

Shape : flat & elongated

### Structure

Allomorph : B

Fraction of allomorph A : 1%

Fraction of allomorph B : 100%

Crystallinity index : 1%

### Composition

Fraction of amylose : 1%

Fraction of amylopectin : 1%

Waxy : yes

### Thermal properties

Melting temperature : 1CÂ°

Melting interval : 1CÂ°

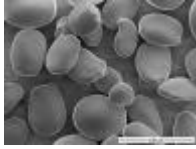
Maximal temperature : 1CÂ°

# Starch presentation

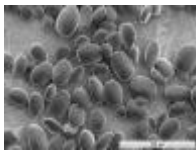
Melting enthalpy : 1J/g

## References

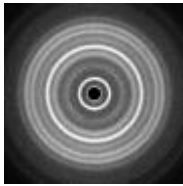
### Image(s)



Scanning electron microscopy (SEM) image



Scanning electron microscopy (SEM) image



X-ray diffraction (XRD) pattern