

## Sugar-apple

### Name

Name : Sugar-apple  
Latin name : Annona squamosa  
French name : Annone

### Source

Organe : seed  
Sample Origin : "pinha", Brazil

### Morphology

Size <10 µm  
Shape : polyhedral

### Structure

Allomorph : C

### Composition

Waxy : no

### References

Link(s) : <http://www.geocities.com/atine50/frutas/pinha.htm>

### Image(s)



Sample Source

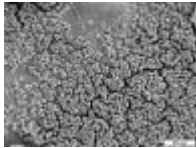
# Starch presentation



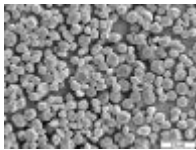
Sample Source



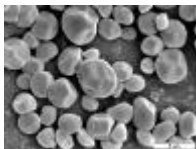
Sample Source



Scanning electron microscopy (SEM) image



Scanning electron microscopy (SEM) image



Scanning electron microscopy (SEM) image