

Taro (plantain)

Name

Name : Taro (plantain)

French name : Taro plantain

Source

Organe : tuber

Sample Origin : Chine

Morphology

Size <10 µm

Shape : polyhedral

Structure

Allomorph : A

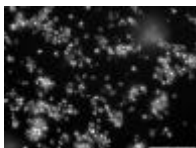
Fraction of allomorph A : 100%

Composition

Waxy : no

References

Image(s)

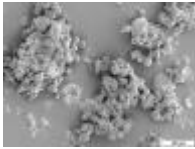


Optical micrograph (OM)

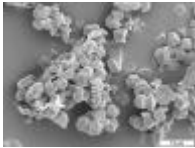
Starch presentation



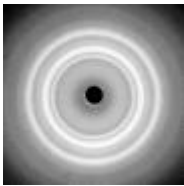
Optical micrograph (OM)



Scanning electron microscopy (SEM) image



Scanning electron microscopy (SEM) image



X-ray diffraction (XRD) pattern