

Banana (plantain)

Name

Name : Banana (plantain)

Latin name : Musa

French name : Banane plantain

Source

Organe : fruit

Sample Origin : Colombie

Morphology

Size <10 μm & 50-100 μm

Shape : flat & elongated

Structure

Allomorph : C

Fraction of allomorph A : 54%

Fraction of allomorph B : 46%

Composition

Fraction of amylose : 28%

Fraction of amylopectin : 72%

Waxy : no

References

Bibliography : Swelling-solubility characteristics, granule size distribution and rheological beha

M.C Nunez-Santiago, L.A Beelo-Pérez, A. Tecante.

Starch presentation

Carbohydrate Polymers, 56 (2004), 65-75.

Bibliography :

Determination of the Molecular and Structural Characteristics of Okenia, Mango

C.E. Millan-Testa, M.G. Mendez-Montealvo, M.-A. Ottenhof, I.A. Farhat, and

Food Chem. 53 (2005), 495-501

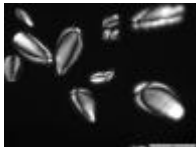
Bibliography :

Changes of banana starch by chemical and physical modification.

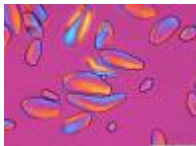
Krzysztof N. Waliszewski, Maria A. Aparicio, Luis A. Bello, Jose A. Monroy.

Carbohydrate Polymers 52 (2003), 237-242.

Image(s)



Optical micrograph (OM)



Optical micrograph (OM)



Sample Source

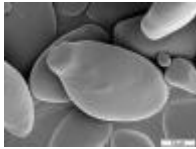


Scanning electron microscopy (SEM) image

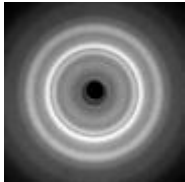
Starch presentation



Scanning electron microscopy (SEM) image



Scanning electron microscopy (SEM) image



X-ray diffraction (XRD) pattern